

Module 12

More Visualization with Google Data Studio

In this module we will:

- Create Case Statements and Calculated Fields
- Avoid Performance Pitfalls with Cache considerations
- Share Dashboards and Discuss Data Access considerations

Creating **Case Statements** and Calculated Fields

```
CASE
```

```
  WHEN Country IN ("USA","Canada","Mexico") THEN "North America"
```

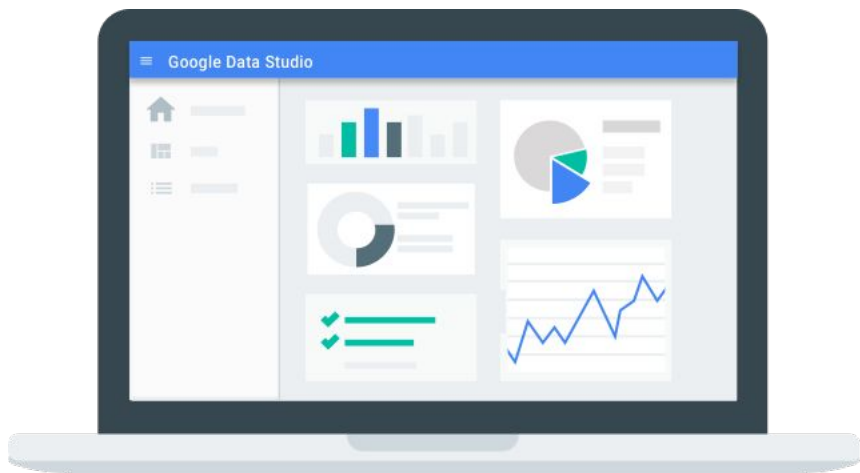
```
  WHEN Country IN ("England","France") THEN "Europe"
```



```
  ELSE "Other"
```

```
END
```

...can also be created directly in SQL functions upstream ...

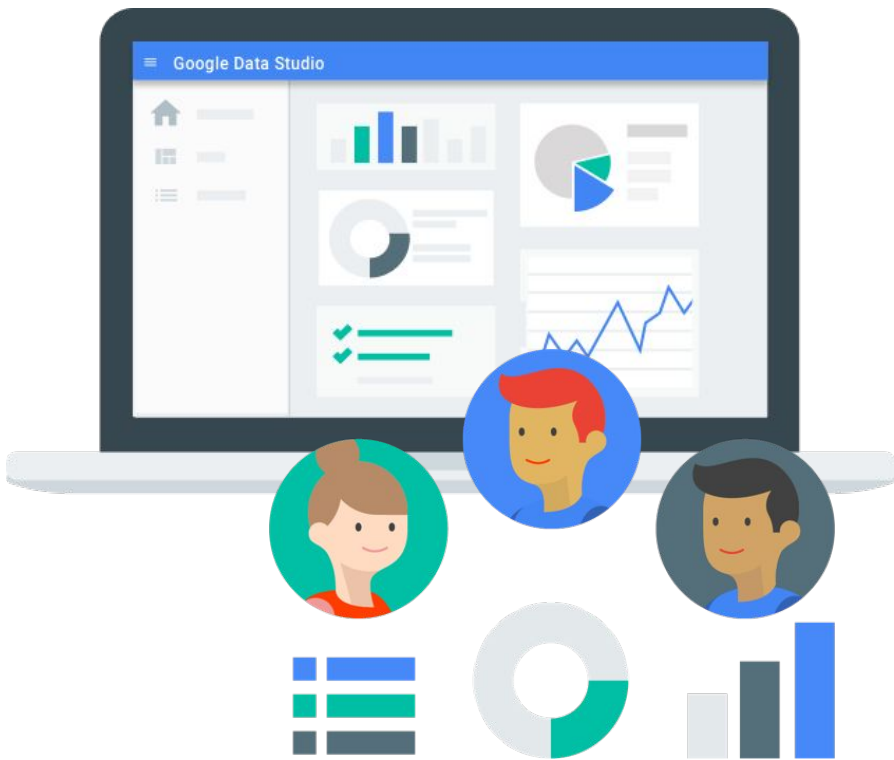
Avoiding Visualization Performance and Cache Pitfalls



- There are 2 parts to Data Studio cache: the query cache, and the prefetch cache.
- When all the charts in the report are being **served from the cache**, a **lightning bolt** icon appears in the bottom right corner 
- Break both caches in Edit mode by using **Refresh Cache** 
- You can (and should) **turn off prefetch cache** if your data **changes frequently**.

File → **Report Settings** → **Enable Cache checkbox**

Sharing and Collaborating on Dashboards



- Data Studio uses Google Drive for sharing and storing files.
- When you share a report with view permission, no login is required to view the report. A Google login is required to edit a report.
- **Sharing a report does NOT share direct access to any added data sources.**
- Data sources must be shared separately from reports.